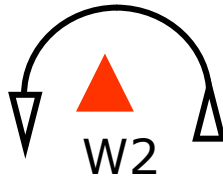


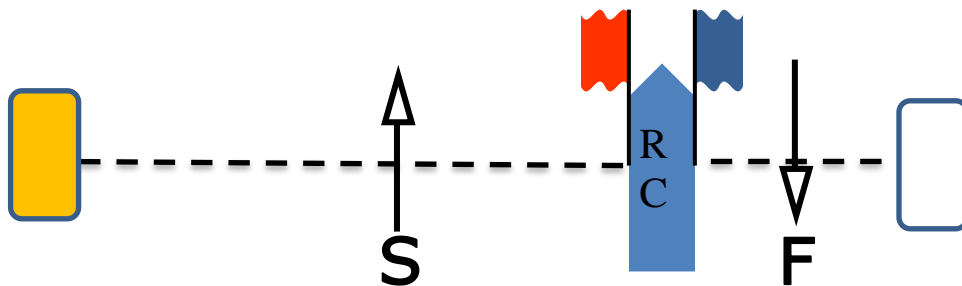
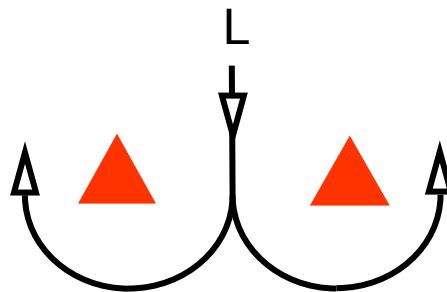
**Amendment #1 6/2/2017 at 1700**

The course diagram has been updated to represent this year's fleets.

# COURSE DIAGRAM



**NOT TO SCALE**



<b>CIRCLE 1:</b>	<b>B40.7:</b>	<b>S-W1-L-W1-F</b>
	<b>FARR 40, PHRF, J/111:</b>	<b>S-W2-L-W2-F</b>
<b>CIRCLE 2:</b>	<b>T-10, J/105, MORF:</b>	<b>S-W1-L-W1-F</b>
	<b>B36.7, J/109:</b>	<b>S-W2-L-W2-F</b>